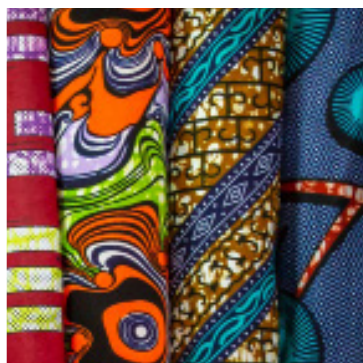


# KARIBU'S AFRICA GRANTMAKING PROGRAM

(KARIBU NEW REALITIES GRANT)

## INFORMATION PACKET

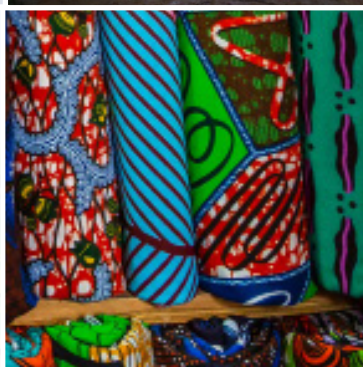
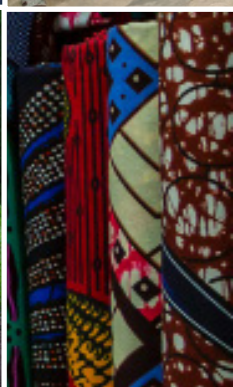


### ELIGIBILITY AND SELECTION

Learn about who is eligible to apply for grants, as well as how we will decide on grants

### APPLICATION GUIDELINES

Learn about our application guidelines, how to apply, and timelines for applications/processing



## Karibu Foundation

RESISTING AND REBUILDING

Update 10. april 2025  
(Subject to change)



# The current crises we face.

Africa is in a particular stage of its history where it is confronted by massive **economic, socio-cultural, political, and ecological crises**. All of these crises are inter-connected and inter-sectional, but are based in an analysis that they are inherently linked to the crisis of capitalism. Marginalized groups such as women, indigenous groups, and youth often pay the highest costs.



These large crises manifest in a number of major challenges that are sometimes Africa-wide and sometimes very specific to individual countries. The overlap between these challenges has made them more visible.

Karibu Foundation's Africa Grantmaking program (often known as the "Karibu New Realities Grant" - KNRG) aims to address the inter-connectivity of these crises (economic-, socio-cultural-, political-, and ecological crises). We hope that the grant program can serve as a contribution to catalyze the struggles that groups of African change agents are waging against unjust systems.



# Is your group embarking on an imaginative initiative as part of the struggle for a more just and equitable continent and fairer world?

The Karibu Foundation's Africa Grantmaking Program – an African-led, co-designed participatory grantmaking initiative – is looking to support bold, creative, and transformational initiatives in Africa.

## Imaginative initiatives

The grant program's "Core Group" - a rotating group of African activists and civil society members - is looking to support **groups of change agents (social movements, associations, organizations, cooperatives, collectives, and/or networks) in Africa** who are launching imaginative initiatives that strengthen and add new dimensions to the struggle for systemic justice.

## Disrupt the status quo of systemic injustice

We are aiming to support groups of change-agents in Africa who have **bold, innovative, forward-thinking, and "constructive troublemaking" ideas that disrupt the status quo of injustices** that the continent and our world are currently facing.



## We are particularly keen on supporting groups that:

- are part of social movements, as well as the ecosystems that provide space for movements to grow, build, and develop.
- are embarking on imaginative and creative initiatives
- utilize transformative and creative tactics (either offline or online)
- have a collaborative orientation (openness and focus on knowledge sharing with other formations/groups for the wider struggle)
- have a pan-African orientation (encourages and strengthen bonds of solidarity between peoples of Africa)
- embody feminist and/or gender-conscious perspectives
- are led by and/or have a majority of their members from peoples on the margins (such as youth, women, LGBTQI+, indigenous groups and others)
- have not already had significant access to grants



<https://www.karibu.no/karibu-new-realities-grant/apply-for-africa-grant/>

## Eligibility Requirements

In order to apply for Karibu's Africa Grants, your group must:

- Be based in Africa and be African-led
- Have particular focus on the root causes of injustice, and how systems are interconnected (systemic approach)
- Have a non-violent approach<sup>1</sup>
- Have a plan and provide a jointly-decided upon concept note (no more than 6 pages in length) or optional video application (maximum 10 minutes) describing your new initiative
- Provide a simple budget draft to help us understand how the funds are expected to be used
- If your group is not registered, this is not a problem. We will just need a registered fiscal sponsor who can potentially receive and financially administer the funds. We are also open to hearing alternative models.

**For practical reasons, applications should preferably be sent in English.** *We are aware of the language barrier that English-only applications puts on movements in a multi-language continent with colonial histories - and we can therefore also receive **French and Portuguese applications** when needed.*

*We are also open to receiving less-traditional applications in the form of video applications. Short-listed concept notes can also be processed and discussed further over the telephone/internet meetings.*

## Selection Criteria

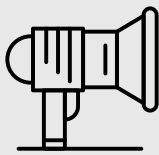
Your **concept note** should give us a clear idea of your group, as well as the values that guide it. Concept notes and/or videos will be read by the program's African "Core Group", who will identify a short-list of promising initiatives.

The short-list will particularly place emphasis on:

- Clarity of vision and purpose of applying group
- Clarity on how the initiative tackles root causes on injustice
- Creativity of tactics used in the initiative
- Extent that the initiative has the potential to disrupt status quo of injustice
- Extent that the group and initiative contributes to movement- and power-building, especially amongst and with marginalized groups
- Various other considerations related to the qualities of what we are keen to support (see previous page), anchoring in larger social movements, geographic spread, and range of thematic focus

<sup>1</sup> The African "Core Group" of the program acknowledges the continual violence waged on poor and marginalized people of the world. A non-violent approach refers to a commitment to utilizing nonviolent and creative means (e.g. acts of protest and persuasion, noncooperation, direct action, civil disobedience, boycotts, strikes, and education) - and not taking up arms - in order to resist and encourage social change. It can be understood as an active form of resistance to injustice. <sup>5</sup>

# PRACTICAL INFORMATION



## *Grant size*

The program provides small grants, ranging from **around 5,000 USD to maximum 15,000 USD**. We anticipate about 10-15 grants total in each cycle.



## *Duration of the initiative*

Initiatives can last between **6-12 months**, with a start date on January 1st. We recognize that transformation takes time, and thus this duration is understood as a contribution towards transformation.



## *What we unfortunately are not funding*

- For-profit and/or income-generating efforts
- Government programs
- Infrastructure (homes, buildings, etc)
- Humanitarian aid (food, water and sanitation, school kits, disaster relief, etc.)
- Capital investments (farm equipment, livestock, computers, etc.)
- Individual scholarships

# PREPARE YOUR APPLICATION



1.

## ***Prepare concept note***

Gather your group to create a joint concept note (either written or visual in the form of a video). Written: No more than 6 pages | Visual: Max 10 minutes. Use our concept note guidelines on the next page for more information!

2.

## ***Prepare budget***

Prepare a short budget to help us understand how you envision using the funds. You are welcome to use our template. We understand that things may change!

3.

## ***Login to Karibu's "Grant Management System"***

Sign-up for a user-name/password, and fill out a short "registration/eligibility form" in Karibu's online system.

4.

## ***Register and send application by the deadline***

Submit your application via Karibu's "Grant Management System" by the deadline given on our website. Applications will only be accepted in this system.

5.

## ***Follow timeline/processing***

We will aim to begin coming back to you by this date. If this date changes, we will be sure to update you!

1.

# GUIDING QUESTIONS / CONCEPT NOTE



**Applicants must send a concept note of no more than 6 pages total.\***

*Below are some questions to assist you to tell us what your imaginative, bold, and forward-thinking initiatives (action / intervention / campaign) wants to achieve. Your concept note should cover these points, and should also give us a clear idea of your formation (association / organization / cooperative / collective / network or movement) and the values that guide it.*

*For practical reasons, applications should preferably be sent in **English**. But we can also be open to accept applications in **French or Portuguese**.*

## 1. The group

**Briefly tell us about your group (social movement / association / organization / cooperative / collective / network).**

Some important details to be included are:

Your group's vision, values and profile; leadership and those responsible for this initiative; information about how the group is organized (structures, decision-making process, etc.); information on your main constituencies; in what ways your group is well positioned to make change. You should also let us know whether your group is formally registered or not.

## 2. The initiative

**Please describe the imaginative and bold initiative (action / intervention / campaign) that you are requesting us to support.**

Outline of some the key activities, tactics or actions that will be included in this initiative (maximum 3 to 5); how this initiative brings about change or makes a difference; how this addresses the root causes and systems of injustice; the geographic scope of the initiative; your target groups; how the initiative will be conducted practically; and when/how/why this initiative was started.

## 3. Gauging Success

**Please describe how you will gauge/evaluate the "success" of this initiative in disrupting the status quo of systemic injustice.**

How will you monitor and follow the progress of the initiative? Where do you expect to see the most change?

## 4. Funds

**Please expand on the information provided in the budget, and tell us how the funds will be used.**

See next page for budget info.







# 3.

# LOGIN TO KARIBU'S GRANT MANAGEMENT SYSTEM



All applications must be received through Karibu's "Grant Management System".

You will first need to register for an account in "Induct" (the software we use) to apply.

**N.B....! Applications must be sent via the "Africa Grants" button on the mainpage of the Grant Management System. See instructions below!**

**Step 1:** Click the "Apply here" button, on Karibu's website. Karibu's "Grant Management System" will then pop-up. Either sign in or click "Create an Account" if you do not have account in Karibu's Grant Management System from before.

**Step 2:** New users: Fill in your email address, name, and password of choice. Click "Create Account". An email will automatically be sent to you that you must confirm.

**Step 3:** Confirm your account through the link in your email, and enter your new account info.

**Step 4:** Be sure to click the proper button to begin the application process for the Africa Grants. You must click "Africa Grants" button to apply.

**Step 5:** Fill out the questions on the registration page, answering each question carefully and concisely. The questions are found on page 11 of this document.

**Step 6:** Click "Upload File" and attach your max 6-page concept note and budget (or optional video application). Review the materials and click "Submit." Your application is now complete and you will receive a confirmation email.

# 4.

## REGISTER AND SEND APPLICATION

Please be prepared to respond to the following **application registration questions** when logging into Karibu's "Grant Management System". You will need to answer these questions online when submitting your concept note + budget:

<b>Project Title:</b> Please enter a simple title for your initiative, to help us identify it.	
<b>Eligibility:</b> <ul style="list-style-type: none"> <li>Will this initiative take place in Africa? Yes/No</li> <li>Is this initiative African-led? Yes/No</li> <li>Does this initiative and group take a non-violent approach? Yes/No</li> </ul> <p><i>A non-violent approach refers to a commitment to utilizing non-violent and creative means (e.g. acts of protest and persuasion, noncooperation, direct action, civil disobedience, boycotts, strikes, and education) - and not taking up arms - in order to resist and encourage social change.</i></p> <ul style="list-style-type: none"> <li>Have you read our guidelines and can confirm that your initiative does NOT cover these points:           <ul style="list-style-type: none"> <li>For-profit and/or income-generating efforts</li> <li>Government programs</li> <li>Infrastructure (homes, buildings, etc.)</li> <li>Humanitarian aid (food, water and sanitation, school kits, disaster relief, etc.)</li> <li>Capital investments (farm equipment, live-stock, computers, etc.)</li> <li>Individual scholarships</li> </ul> </li> </ul> <p>Yes, I confirm / No</p> <p>If you answered "No" to any of these questions, please describe why</p>	<b>Short summary of the initiative</b> <p>Please provide a very brief summary of the initiative (max 100 words)*</p> <p>Which Region of Africa will this initiative take place? *</p> <ul style="list-style-type: none"> <li>Western Africa</li> <li>Southern Africa / Island states</li> <li>Central Africa</li> <li>Eastern Africa</li> <li>North Africa</li> <li>Pan-African (two or more countries and/or Regions of Africa)</li> </ul> <p>Which country/countries will the initiative take place?</p> <p>Which crises does your initiative primarily aim to confront: *</p> <ul style="list-style-type: none"> <li>Economic crises</li> <li>Socio-cultural crises</li> <li>Political crises</li> <li>Ecological crises</li> <li>Multiple crises</li> </ul> <p>Time period of the initiative:*</p> <p>Initiatives can last between 6-12 months</p> <p>Amount requested in USD:*</p>
<b>Contact Info</b> <ul style="list-style-type: none"> <li>Name of group</li> <li>Address</li> <li>Country</li> <li>Telephone</li> <li>Leadership information</li> <li>Main contact email</li> <li>Website or social media (optional)</li> <li>Is your group formally registered? Yes/No</li> <li>If you are NOT formally registered, do you have an idea of which registered group can serve as a "fiscal sponsor" that can potentially receive and financially administer the funds. We are also open to hearing alternative models. Please provide detail.</li> </ul>	<b>Additional Info</b> <ul style="list-style-type: none"> <li>Tell us about what other movements you collaborate/cooperate with, who is in your social movement "eco-system", and/or other larger movements or struggles you see yourself as part of:</li> <li>Has your group received grants from other funders in the last five years? If so, please provide detail.</li> <li>How did you hear about this grant program</li> <li>Anything else you would like to tell us?</li> </ul>

5.

# APPLICATION TIMELINE AND PROCESSING



June-  
August



August-  
September



## APPLICATION WINDOW AND SUBMISSION DEADLINE

Send in your application by 23:59 Central African Time (CAT) on **the deadline in August**

This deadline will be clear on our website.

Applications submitted past this date will not be considered.

All applications **MUST** be submitted through Karibu's "Grant Management System".



## PROCESSING TIME

After applying, applicants will receive a link where you can get general updates on application processing, with short updates from the "Core Group".

*This link will be shared with applicants via email.*

Please note that there will not be updates on your application in particular, but where we are in the entirety of the process.





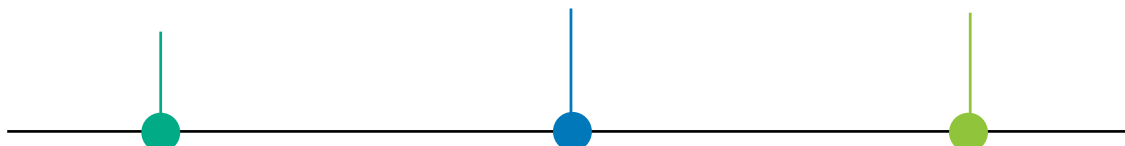
**September**



**October**

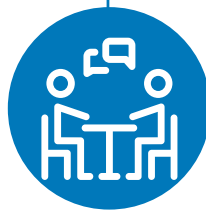


**December**



**"CORE GROUP"  
MEETINGS TO  
SHORT LIST**

The African "Core Group" will meet to make decisions on the shortlist of applications.



**SHORTLISTED  
GROUPS ARE  
CONTACTED**

We will contact short-listed candidates to learn more about their work and get a better impression of the project.



**APPLICANTS  
INFORMED**

Applicants can expect to be informed of the news of their application by early December.

All applicants who have applied shortlisted but not selected will receive brief feedback on why their application was not considered.

We unfortunately, however, cannot provide feedback on all applications.

# QUESTIONS?

FAQ



Read our  
"Frequently Asked  
Questions" at:  
[karibu.no/karibu-new-realities-grant/KNRG-FAQs/](https://www.karibu.no/karibu-new-realities-grant/KNRG-FAQs/)

Webinar



Watch the  
informational  
webinar from  
the pilot phase,  
found on our  
website.

WhatsApp



Send us a BRIEF  
"WhatsApp"  
message at:

**0047 906 35 204**



<https://www.karibu.no/karibu-new-realities-grant/apply-for-africa-grant/>



[KNRG@karibu.no](mailto:KNRG@karibu.no)